

Panorama

Facts // News // Information

- **10 years of REKNOW or Why this is the last "Panorama"**

We are celebrating REKNOW's 10th birthday this year! This anniversary and the fact that Mrs. Michelle Mitsching is now responsible for marketing at REKNOW since last December, prompted us to try new communication channels. Therefore, this edition of the "Panorama" will be the last of its kind.

In order to provide you all important information about **EMM-Check** to you as usual, our new newsletter "Panorama" will be available to you every four weeks starting next month - digital and in a new design!

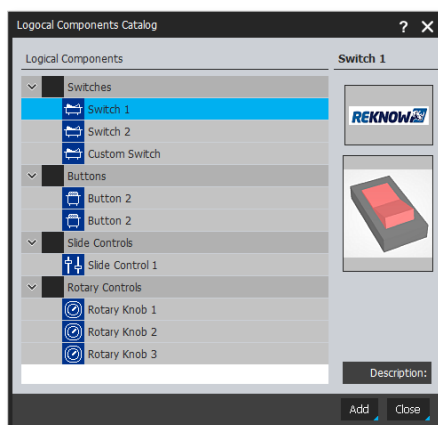
We are looking forward to a successful year with you and to a great birthday on April 11th, 2018!

- **Release 4.2.5.0**

Since the 9th of February, EMM-Check-Release 4.2.5.0 is available for download on our website. The following topics give you a first overview of the new functions:

Logical Components

Logical components allow you to interact with the geometry in driver mode and in VR mode. Logical components are switches, buttons, sliders and knobs which can be inserted from a catalogue into the model structure. Logical components can be combined with objects such as controls, sequences or animations in order to control them.

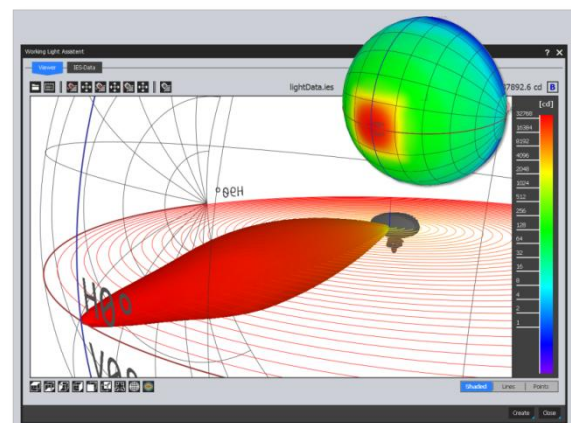


In driver mode, the logical components can be operated with the mouse. In VR mode, the HTC Vive controllers can be used to interact with the logical components.



Assistant for user-defined working lights

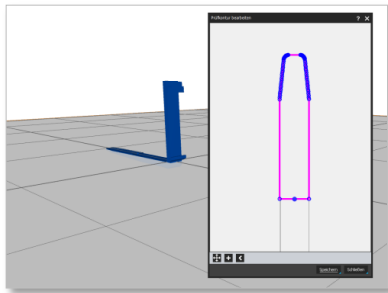
With the new add-on for defining user-defined working lights, you can now create your own working lights and use them in **EMM-Check**. This requires the ies file of the respective light, which contains the light output data. The ies file can be loaded in an editor and the components of the working light can be loaded and positioned. Once the working light has been created, it can be used over the network to provide them to other **EMM-Check** users within the company.



A separate chapter for custom working lights has been added to the working lights catalog.

User-defined forks

A new assistant allows the definition of user-defined forks for use in **EMM-Check**. The 3D model of the fork is loaded and positioned. After starting the wizard, it automatically detects the area to be tested, which can be adjusted by the user, if necessary.

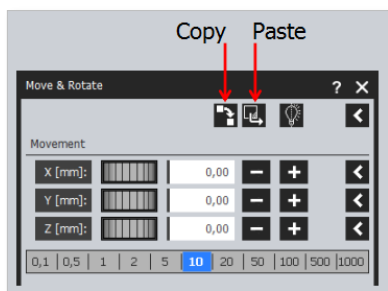


After the final definition of the metadata, the fork is exported and can be used over the network. A separate chapter for user-defined forks has been added to the fork catalog.

Enhancements

The new release also offers a number of functional enhancements.

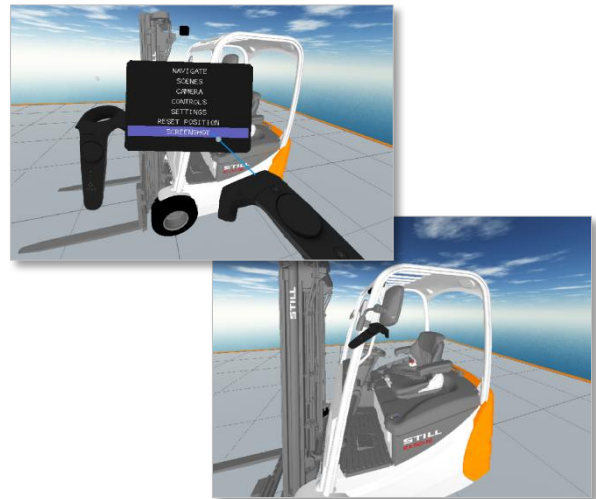
- Planar generic mirror support
Two planar generic mirrors have been implemented. The round and rectangular mirrors are parameterized, and the size or radius can be adjusted in the properties of the mirror glass.
- New chapter "Used components" in the report
The chapter "Used components" lists all mirrors, cameras, monitors, working lights, forks, test loads and logical components with their parameters. This means that the parameters of generic components also appear in the report.
- Copy & paste in positioning dialog
In the "Move & Rotate" and "Move Origin" dialogs two new functions are available. With the "Copy" function, the currently set values can be copied to the clipboard. The "Paste" function allows you to paste the copied values.



- Statistics
At the node of each standard a statistic can be displayed by using the context menu function "Properties". This displays information about the last analysis (start time, end time, duration, result). The "Standards" main node can also be used to display statistics for all loaded standards using the "Properties" function.

HTC Vive-Modus & VR-Cluster

A function for creating screenshots has been implemented in the VR menu. After selecting the function in the menu on the left HTC Vive Controller, the user looks in the desired direction and then pulls the trigger on the right HTC Vive controller. The screenshot is saved in the directory that has been stored in the user settings (tab "Screenshot"). There you can also define whether the left eye, the right eye or both eyes should be used when creating a screenshot.



In a VR session in the REKNOW VR cluster, the names of all participants are now also displayed via their avatars.

• EMM-Check Roadshow-Weeks

A new communication channel to strengthen the direct contact with you and to inform you personally and in detail about the possibilities of **EMM-Check**, we will start this year our roadshows all over Europe.

For example, in calendar weeks 24 and 25 as well as 41 and 42, we will be available to present not only normative field-of-view analysis but also, in particular, the topics of virtual reality, the VR-Cluster and the VR-Catalog with typical environmental scenarios, which will be available shortly. As announced, we will inform you about the latter point in our newsletter "Panorama".

Such a roadshow appointment in your company could take about two to three hours and addresses not only your designers and design managers, but also your marketing and sales staff.

For our customers and interested companies who would like to see such a presentation in our office in Hamburg, we invite you to our newly opened VR presentation room.

• Information / Contact

You will find recent information about **EMM-Check** on our website www.reknow.de.

You can also give us a call by dialing +49 40 98 76 00 02 or by sending us a mail info@reknow.de.