

Panorama

Facts // News // Information

- New standard „ISO 5006:2017“**

With the latest **EMM-Check-Release 4.2.2.0** from 31st of May 2017 the „ISO 5006:2017“ is available as a separate standard. You will find the following new features or changes compared to ISO 5006:2006:

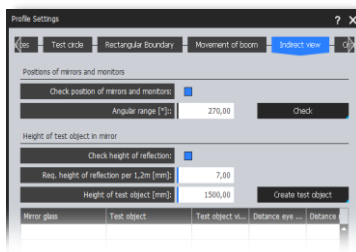
Height of test body depends on vehicle type and weight



You will find a new selection box for defining the height of the RBs on the tab "Rectangular Boundary". This can be selected vehicle and weight-specific. Please note the special regulation for the RB heights for skid steer loaders.

Position of visual aids

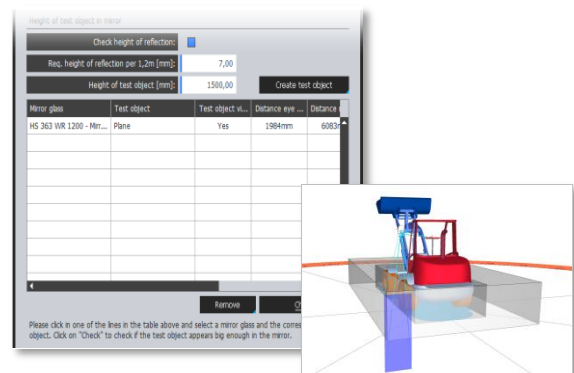
On the tab "Indirect view" you can now check if all visibility aids (mirrors and monitors) are positioned within a range of 180° (or 270° for excavators) in front of the driver. This can be checked directly in the dialog.



The check will also be performed during analysis. The results will be printed in the report.

Size of objects in mirrors

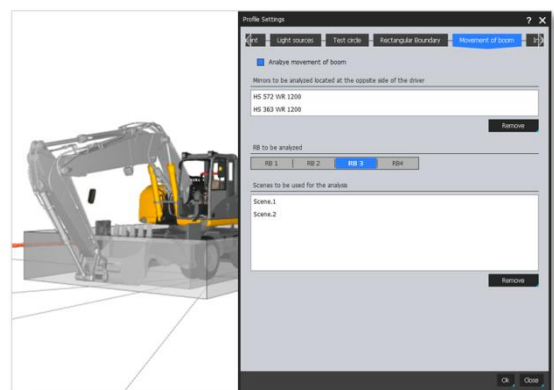
On the tab "Indirect View" you can also check the size of a test object in a mirror.



The test object (plane) can be created directly from the dialog. It can then be positioned and attached to a mirror glass. The check can be performed directly from within the dialog.

Visibility of mirrors during movement of boom

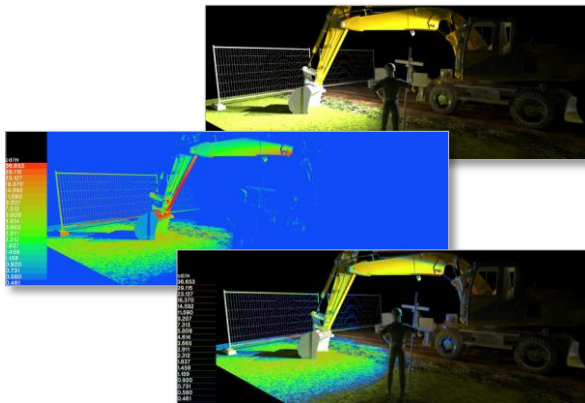
On the tab "Movement of boom" the visibility of mirrors can be checked while moving the boom. Before scenes have to be created defining the positions of the boom to be analyzed.



Note: The ISO 5006:2017 leaves room for interpretation in some chapters. REKNOW currently works on clarification (in particular section 8.3.3.3). For this reason the new standard still has a Beta-Status in **EMM-Check**.

- **New Add-On „ISO Lux-Rendering“**

This Add-On let's you analyze the light distribution on the vehicle geometry and the environment and to retrieve information about the Lux-values.



The Add-On is available in the menu section "Tools" in the upper menu bar (if license is obtained). Please contact us in order to have a trial!

- **Overview of new functions**

Below you will find a selection of new and enhanced features in release 4.2.2.0:

- When inserting a mirror, a camera or a working light on the geometry (right click), **EMM-Check** will take the position of the mouse pointer into account.
- Multiple mirrors or cameras can now be attached to a standard in one step. Also mirrors and cameras can now be detached from a standard.
- The new function "Copy material properties" in the contextual menu can be used to copy the selected model's material properties. Then "Apply material properties" can be used to apply the copied values to other models.
- The definition of vehicle offsets for the RB calculation in the dialog "Project Data" can now be done "relative" or "absolute". The option "relative" defines offsets that follow the vehicle's geometrical extension. The Option "absolute" is referencing the offset values to the master axis system.
- After copying an object, the positioning dialog will be opened automatically (refer to settings "Geometry").
- The new contextual menu function "Toggle REAL/THEO" toggles the type of positioning visibility fields directly between a theoretical and a real visibility field.
- When using the function "Move origin", the axis systems will temporarily be shown if they are currently be hidden.
- New options for controlling the widths of patterns for mirror and camera visibility fields on reports and decals have been added on the tab "Geometry" in the setting dialog.
- The preview "Track" has been enhanced and can now generate distance maps. A distance map shows the distance between the view lines from the eye point to the track and the geometry.
- A new option has been added on the tab "Geometry" in the settings dialog. The new option controls the dehighlighting of the selected object when opening the positioning dialog (Move & Rotate). The selected component can also be dehighlighted directly within the dialog.

- **EMM-Check at the ElmiaWood 2017**

Despite heavy rain, the first participation of REKNOW at the ElmiaWood, the biggest forestry fair in the world, was a full success! Representatives of leading forestry machine manufacturers were informed about **EMM-Check**, experienced the normative visibility field analysis and entered the virtual world for subjective evaluation of the driver's view.



We would like to say "Thank you" to **Mekra Lang GmbH & Co. KG**, Ergersheim, that made the participation possible and contributed to this success.

- **EMM-Check Customer's Day 2017**

The **4. EMM-Check Customer's Day** will take place on 26th of September at Maritim Hotel Frankfurt in Frankfurt/Main.

There is the possibility for you to present your company and your experiences as a guest speaker on the topics "visibility, visual standardization and field of view security". We would be pleased to receive your registration.

Please note the number of registrations limited to 40. Therefore we would like to ask for an early registration!

- **Important dates in 2017**

Please note the following dates in 2017:

- 4. EMM-Check Customer's Day 2017
 - **26th of September 2017, Maritim Hotel Frankfurt/Main**
- Agritechnica 2017
 - **12th-18th of November 2017, Hannover**
 - **REKNOW at the booth of MEKRA Lang**

- **Information / Contact**

You'll find the latest news about **EMM-Check** on our website: www.reknow.de/emm-check

You can call us by using this number
+49 (0)40 98 76 00 02

or by calling the hotline

0800 735 66 99
free from German landline

You can also send us a mail to info@reknow.de.