



Panorama

Facts // News // Information

- Preliminary remarks**

This **Panorama** focuses the version 4.2.0.0 of **EMM-Check** that is available since the 8th of March 2017.

EMM-Check 4.2.0.0 comes with a new viewer that delivers best performance even if heavy models are loaded. Support for the HTC-Vive®, ergonomic enhancements and function extensions are also highlights of the new version.

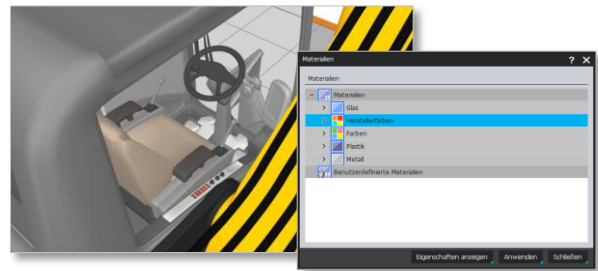
We would like to say thank you to our customers that have tested the beta-version and that gave us feedback regarding bugs and enhancements!

- Viewer**

Smoothed transitions and surfaces and an improved visualization of components characterize the new viewer. Also the visualization of transparent objects do not decrease the performance anymore and structures like grids will be rendered more detailed.



Color, diffuse color and shininess can now be adjusted for each component. In order to apply visualization properties a material catalog containing RAL-colors and manufacturer colors is available.



The background of the viewer can be defined as color, image or skybox. Beside the images and skyboxes delivered with **EMM-Check**, user-defined images and skyboxes can be defined.



The new viewer supports the adjustment of light colors and intensity. This way the optimal illumination for every vehicle can be achieved.



REKNOW GmbH & Co. KG
Neumünstersche Straße 14
20251 Hamburg
Germany

REKNOW Verwaltungs GmbH
Neumünstersche Straße 14
20251 Hamburg
Germany

fon : +49(0) 40 / 98 76 00 02
fax : +49(0) 40 / 98 76 00 04
eMail : info@reknow.de
Internet: www.reknow.de

Kreissparkasse Walsrode
BLZ : 251 523 75
Kto-Nr. : 1094671
IBAN : DE35 2515 2375 0001 0946 71
SWIFT-BIC: NOLADE21WAL

Registergericht:
Hamburg
HRA: 114880

Registergericht:
Hamburg
HRB: 123110

Geschäftsführer:
Dipl.-Ing. (FH) Dirk Janßen
Dipl.-Ing. Sebastian Schneider

Steuernummer: 49/654/00864
Ust-ID-Nr. : DE 259 307 098

- **HTC Vive®**

The HTC Vive® is now supported by **EMM-Check** through an additional Add-On. In HTC Vive®-Mode the view from inside the cabin can be simulated as well as the movement around the vehicle.

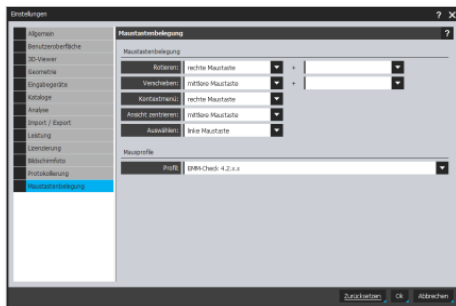
The controllers delivered with the HTC Vive® will be displayed in virtual reality and will be used in future to let the user interact with the geometry in **EMM-Check**.



- **Ergonomics**

The contextual menu has been redesigned fundamental. Automatic expansion of menu categories and "often used functions" for faster access to functions are only some of the new features.

Mouse navigation in **EMM-Check** was changed: Rotating the model now can be performed by only pressing the right mouse button and moving the mouse. Of course, the mouse button actions can also be defined free in the settings by the user.



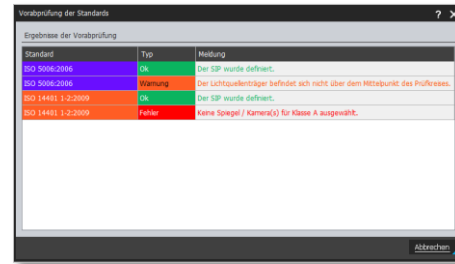
- **Functional enhancements**

EMM-Check Version 4.2.0.0 delivers many minor and some major functional enhancements that ease up the use of **EMM-Check**. One of the enhancements is the function "Align vehicle" that automatically aligns the vehicle according to a standard (ISO 5006, DIN EN 15830, StVZO, ECE R46 und ISO 5721-1).

An additional check for the distance between the light sources and the geometry of the cabin was implemented according to §5.3 of ISO 13564.

The definition dialog for an alignment rule now contains a preview function to simplify the adjustment of the correct rotational offset.

A new pre-check has been implemented when starting an analysis that shows status messages according to the standard to be analyzed in a dialog.



- **ISO 5006:2016 - Start of implementation**

The redesign of ISO 5006:2006 is finished. The "Final Draft" of ISO/FDIS 5006:2016 is available. This is the start signal for REKNOW for the implementation of this standard in **EMM-Check**. The „ISO 5006:2016“ will be available as a separate standard approx. by the end of Mai 2017.

As announced in the last **Panorama** customers that already use the ISO 5006:2006 can use the new standard within maintenance.

- **EMM-Check Customer Day 2017**

As announced this year's **EMM-Check Customer Day** will take place on 26th of September 2017 at Maritim Hotel Frankfurt in Frankfurt/Main.

We are looking for guest speakers! If you are interested to present your company and the benefits you experienced with **EMM-Check**, please contact us.

Please note that the number of participants is limited to 40. If you would like to attend the **EMM-Check Customer Day**, we would like to ask you to register soon.

- **Save the date 2017**

Please note the following dates in 2017:

- ELMIA Wood
 - **7th - 10th of June 2017, Jönköping, Sweden**
 - **REKNOW at the booth of Mekra Lang**
- EMM-Check Customer Day 2017
 - **26th of September 2017, Maritim Hotel Frankfurt/Main**
- Agritechnica 2017
 - **12th to 18th of November 2017, Hannover**
 - **REKNOW at the booth of Mekra Lang**

- **Information / Contact**

You will find updated information about **EMM-Check** on our website: www.reknow.de/emm-check.

You can contact us be phone (land line)

+49 (0)40 98 76 00 02

or by calling our hotline

0800 735 66 99

kostenfrei aus dem deutschen Festnetz

or by sending us a mail to info@reknow.de.