



# Panorama

Facts // News // Information

- **Preliminary remarks**

The focus of today's **Panorama** is the review of the **EMM-Check** Customer Days 2016 in September located in Hannover and Stuttgart and the essential enhancements of **EMM-Check** version 4.2.0.0, that will be available from December 2016 as Beta-Test and that will replace the current version 4.1.2.x after the test phase in February 2017.

- **Review of the EMM-Check Customer Days**

The main topics of this year's Customer Days were beside user reports the enhancement of the field of view in dark working environments, the substitution of mirrors by camera-monitor systems and the simulation of working lights on the vehicle geometry with **EMM-Check**.



We would like to say thank you to the representatives from ATLAS Weyhausen, VOLVO CE, Hella Fahrzeugteile Austria and Herrman Nordic Lights for their fantastic presentations.

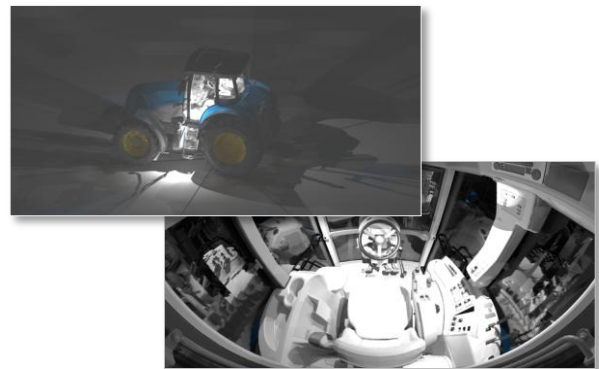
- **Preview of EMM-Check Version 4.2.0.0**

In the following chapters we would like to show you the enhanced capabilities of the new viewer of **EMM-Check 4.2.0.0** and the new add-on's "Light Simulation" and "HTC Vive®-Integration".

- **New Add-on: Light Simulation**

This add-on allows you to calculate the light intensity on the vehicle geometry. You can detect any kind of glare or over exposure that may impair the driver's view already during the development process.

Furthermore **EMM-Check** analyzes service lights, the visibility of safety instruction decals in dark environments, the maskings with consideration of environmental light and reflected light and the illumination of the cabin.

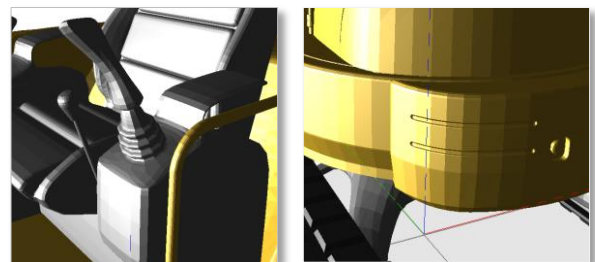


- **Enhanced visualization with the new viewer**

The visualization of models has been completely reworked in the new viewer. The current behavior - high transparency quality means slow performance - is not longer existing from version 4.2.0.0. Also the faceted visualization of geometry will no longer exist.

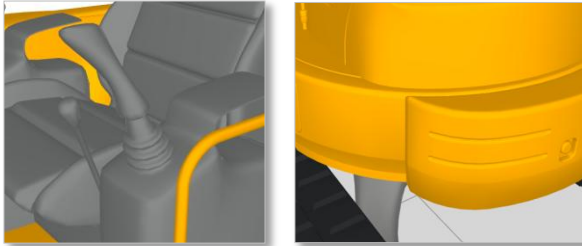
**Version 4.1.2.0**

- faceted visualization of geometry
- very strong contrast



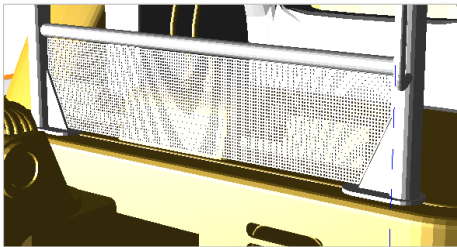
## Version 4.2.0.0

- smooth transitions between facets
- better visualization of components



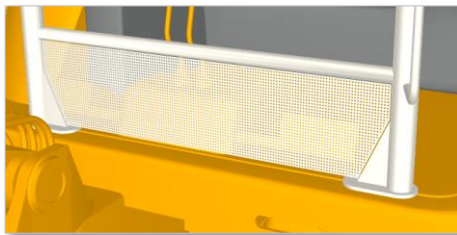
## Version 4.1.2.0

- "patterns" in visualization of fine structures
- components behind the structure are not visible



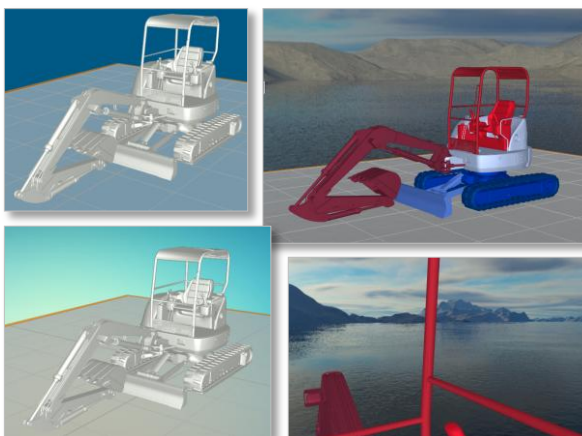
## Version 4.2.0.0

- correct visualization of fine structures



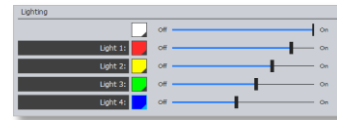
## • Background

The background can be defined as color, image or "skybox". Beside pre-defined images and skyboxes, user-defined images and skyboxes can also be used.



## • Environmental lighting

The lighting color and intensity are adjustable in the new viewer. This way an optimal lighting can be achieved for every kind of vehicle.



## • Materials

For each component the diffuse color, the specular color and the specular shininess can be defined. A material catalog with RAL-colors and manufacturer colors has been implemented.



## • Integration of HTC Vive

From version 4.2.0.0 the HTC Vive will be supported by a separate add-on.



Quelle: <http://www.vive.com/de>

## • Beta-Test of EMM-Check 4.2.0.0

The Beta-Version of **EMM-Check 4.2.0.0** will be available from December for a free 3 month test period. You can use the Beta-Version in parallel to your productive version. From March 2017 **EMM-Check 4.2.0.0** can be used productively.

## • Information / Contact

You will find all news about **EMM-Check** on our website: [www.reknow.de/emm-check](http://www.reknow.de/emm-check).

You can call us by phone (german landline)

+49 (0)40 98 76 00 02

or you can call our hotline

0800 735 66 99

free from german landline

You can also send a mail to [info@reknow.de](mailto:info@reknow.de).