



Panorama

Facts // News // Information

- **Review bauma 2016**

bauma 2016 was very successful for REKNOW again. Representatives of well known construction vehicle manufacturers took advantage of the exhibition to get information about the latest developments in **EMM-Check** and the further development of the software. The key topics have been the version 4.1.0.0 (release on 29th of April) and the new enhanced viewer, that will be available this fall and offers new features for a better visualization of vehicles and for better performance.



We would like to say "Thank you" to **Mekra Lang GmbH & Co. KG**, Egersheim, which allowed us to participate the bauma 2016 as an exhibitor and thus contributed again to our success.

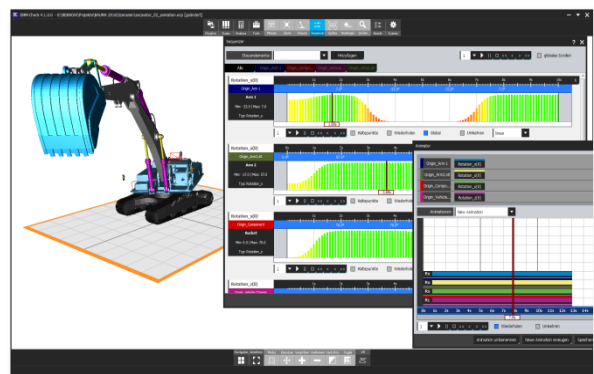
Furthermore we say "Thank you" to **Atlas Weyhausen GmbH**, Wildeshausen, that provided the vehicle data of their latest wheel loader „Weycor Radlader AR 250e“ to us for realistic demos in **EMM-Check**.

- **EMM-Check - Release 4.1.0.0 available**

From the 29th of April the new release 4.1.0.0 is available. The new function "Sequencer" for animating vehicles, the availability of the ECE R46 regulation as a new standard as well as two new types of rules for defining kinematic dependencies are just some highlights of the new release. (please refer the next articles in this **Panorama**).

- **New function „Sequencer“ verfügbar**

The new function "Sequencer", that is available from release 4.1.0.0, allows to animate vehicles. Therefore values of controls can be defined in relation to a timeline. This allows you to experience the driver's view in reproducibile movement scenarios.



While an animation is running, **EMM-Check** can be used as normal. The driver mode and the Oculus Rift mode can be used to virtually sit inside the vehicle while it is moving.

Sequences can be combined to more complex movement scenarios within the Animator.

- **Kinematic dependencies - New rules**

Two new rules are available from release 4.1.0.0 that allow an easy definition of kinematic dependencies between components of a vehicle:

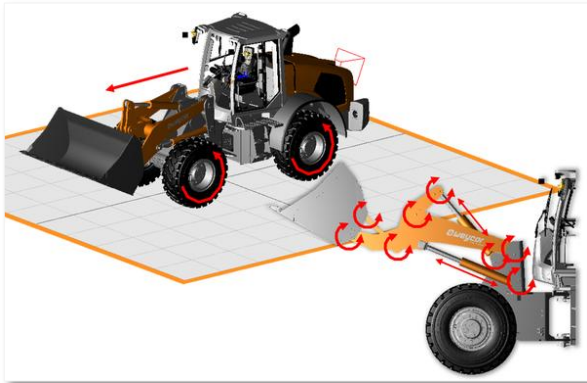
DoF-Rule:

A "DoF-Rule" (DoF: Abbreviation for "Degree of Freedom") connects different degrees of freedom of two components by a factor. E.g. if one component moves along the X-Axis, the other component will rotate about the Z-Axis. This can be used to simulate the rotation of wheels when the vehicle moves forth and back which causes a much more realistic feeling when using the driver mode or Oculus Rift mode.

The realistic feeling can also be improved by using the new feature "Environment". (please refer article "New function "Environment" - 360° images" in this **Panorama**)

Alignment Rule:

An alignment rule is used to connect a component to a reference point. The component will then follow the movement of the reference point. This is useful to simulate the movement of a hydraulic cylinder in **EMM-Check**, for example.



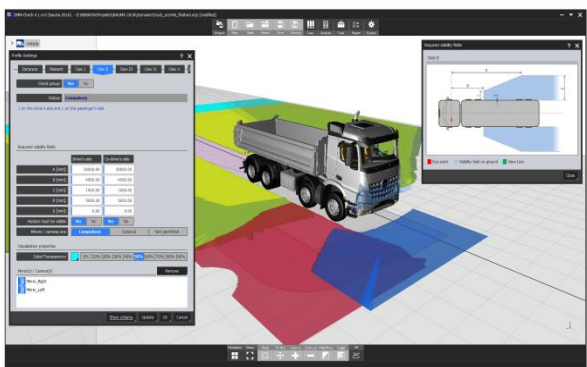
- **Support of cameras in ISO 14401:2009**

EMM-Check now supports cameras when running an analysis according to ISO 14401:2009 as explained in chapter 5.1 of this standard.

- **New standard "ECE R46" implemented**

A new standard "ECE R46" is available from release 4.1.0.0 in **EMM-Check**.

The ECE R46 is a European regulation that defines the analysis criteria for the indirect field of view (mirrors/cameras) for cars, trucks and busses. E.g. the StVZO refers the ECE R46.



- **New function „Environment“ - 360° images**

This new function allows to map 360° images on a virtual sphere in **EMM-Check**. The sphere is positioned around the vehicle and creates a realistic background in driver mode and Oculus Rift mode.



The function can also be used to create screenshots for product presentations.

- **Customer Days - Customer presentations**

This year's customer days take place, as every year, in September in Hannover and Stuttgart. You find detailed information about the exact dates in the chapter "Save the date" of this **Panorama**

We cordially invite you, to do a presentation as a specialist during our customer days. Topics like "Field of View", "Standards" and "View safety" or comparable topics are focused. Of course you can define the topics of your presentation by yourself if interested. We are happy to support you.

Please contact us if you are interested to participate the customer days as a visitor or presenter. We look forward to your response.

- **Save the date**

Please note the following dates:

- EMM-Check Customer Days 2016
 - **14th of September 2016, Hannover (airport)**
 - **21rd of September 2016, Stuttgart (airport)**

- **Information / Contact**

You'll find current information about **EMM-Check** on our website: www.reknow.de/emm-check.

You can also give us a call directly:

+49 (0)40 98 76 00 02

Or call our hotline:

0800 735 66 99
(free from the German landline)

You can also contact us by mail. Just send a mail to: info@reknow.de