

Panorama

Facts // News // Information

• REKNOW at bauma 2016

At **bauma 2016** in Munich, we inform you again comprehensively on the latest innovations in **EMM-Check 4**.



From **11th to 17th of April 2016** we are available in hall B3 at booth 242 as co-exhibitor of Mekra Lang GmbH & Co. KG for a live demo of **EMM-Check 4**.

We wish you a successful exhibition and look forward to your visit and interesting conversations with you!

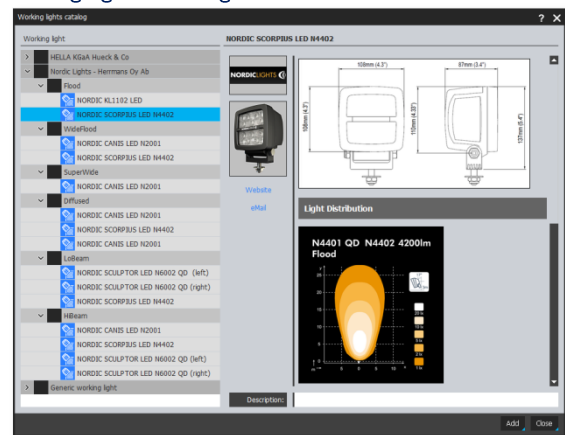
• End of Support for Version 3

We quit the support for **EMM-Check Version 3** at **31st of December 2016**. The affected companies will be notified about the termination of support shortly.

Note: We offer a free EMM-Check 3 viewer for all users that have migrated to EMM-Check 4 but still want to open the ecp-files from EMM-Check 3.

• Nordic Lights-working lights available

From Release 4.0.10.0 working lights from **Nordic Lights** are available in **EMM-Check**. Beside working lights from HELLA KGaA Hueck & Co working lights from a second manufacturer are now available in the working lights catalog of **EMM-Check**.



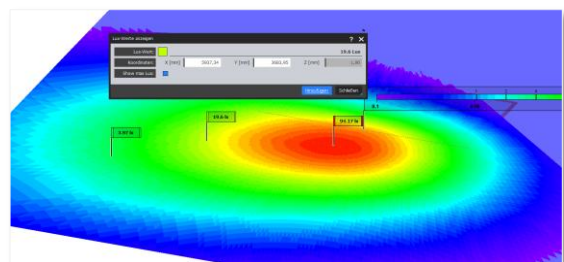
• Enhanced functionality for illuminated areas

The following functional enhancements have been implemented for illuminated areas:

- Option for the calculation of illuminated areas with cos-fraction:

$$\text{Lux-Value} = (\text{Candela-Value} / \text{Distance}^2) * \cos(\text{Angle of incidence})$$
 without cos-fraction:

$$\text{Lux-Value} = (\text{Candela-Value} / \text{Distance}^2)$$
- Enhanced function for displaying Lux-Values on an illuminated area
- Visualization of the maximum Lux-Value of an illuminated area.



• Announcement of EMM-Check Customer Days

As announced at our customer days last September, the customer days 2016 are scheduled for the following dates:

- **14th of September 2016** in **Hannover**
Airport, Mövenpick Conference Center
- **21st of September 2016** in **Stuttgart**
Airport, Wöllhaf Conference- und Banquet-Center

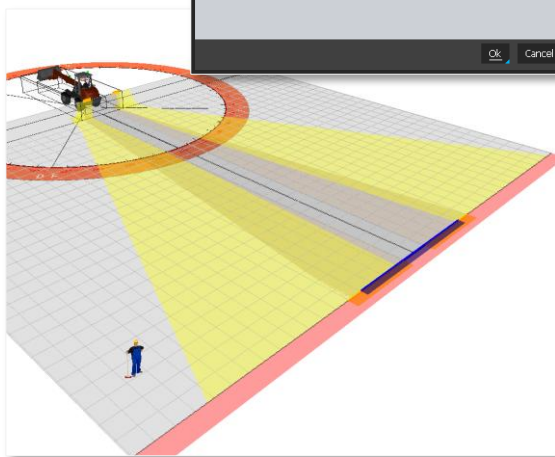
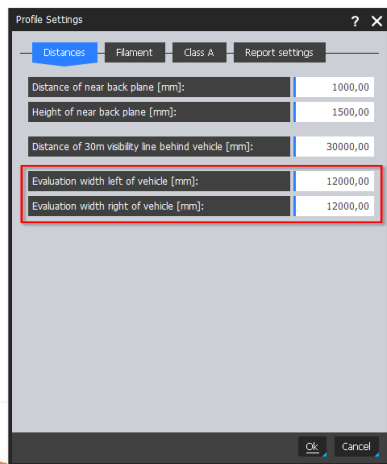
Please remember the dates. We'll send a separate invitation to you by the middle of the year via mail as usual.

We kindly invite you to hold a presentation at our customer days 2016 as a professional speaker. If you are interested, please contact us!

• Modifications in standard „ISO 14401:2009“

With the revised standard ISO 14401:2009, the width of the evaluation area is now adjustable in **EMM-Check 4**.

This can be done by entering a left and a right offset on the tab "Distances" in the dialog "Profile Settings". The total width now is defined by the width of the vehicle and the two offsets. With those modifications extremely wide vehicles can now be analyzed.



• Revised „StVZO §35 Para. 2, Directive 11“

Together with TÜV Nord, Hannover, REKNOW discussed the interpretation of regulations defined in the StVZO §35b Para. 2, Directive 11. The results from this discussion have been implemented in **EMM-Check 4**. This was related to the following questions:

- Evaluation of maskings located on a sector border
- Serial processing of additional checks
- Interpretation of the regulation for the front end measure

The updated evaluation according to this standard is available from release 4.0.10.0.

• Revised reports in EMM-Check

All reports have been fundamentally revised in the latest release 4.0.10.0 from 19th of February 2016. The layout and the design have been updated, all reports are structured more clearly and now have a better readability.

Furthermore the option for shortened reports is now available for the following standard:

- ISO 5006:2006
- ISO 14401:2009
- ISO 13564
- DIN EN 16307

All reports can now be created in color, grayscale or black/white. This affects all graphics and illustrations in the reports.

• Save the date

Please note the following dates:

- bauma 2016
 - **11th till 17th of April 2016, Munich**
 - **REKNOW at the booth of MEKRA Lang**
 - **Hall B3, Booth 242**
- EMM-Check Customer Days 2016
 - **14th of September 2016, Hannover (airport)**
 - **21rd of September 2016, Stuttgart (airport)**

▪ Information / Contact

You'll find current information about **EMM-Check** on our website: www.reknow.de/emm-check.

You can also give us a call directly:

+49 (0)40 98 76 00 02

Or call our hotline:

0800 735 66 99
(free from the German landline)

You can also contact us by mail. Just send a mail to: info@reknow.de