



Panorama

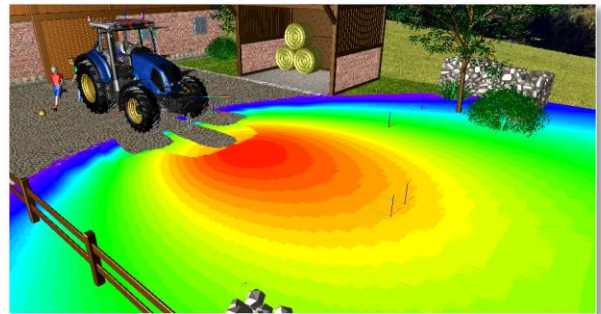
Facts // News // Information

- **Successful EMM-Check 4-Customer Days**

Case studies of leading construction machinery and truck manufacturers focused on sight, visibility field standards and visibility field safety characterized the Customer Days at Hannover and Stuttgart last month. Moreover REKNOW presented new functionalities for the evaluation of the indirect field of view such as working light simulation or mirror and camera simulation.



For fast visualization and positioning of the illuminated area(s), all beams coming from the light that have a Candela-value of more than 50% of the max. Candela-value will be displayed. The visualization can be toggles to display an ISO-Lux diagram. Illuminated areas will be displayed on planes and can manage multiple working lights.



- **REKNOW at the Agritechnica**

At the **Agritechnica 2015** we will inform you about the latest features of **EMM-Check 4**.



- **Standards available again**

Two standard from EMM-Check Version 3 are now also available in **EMM-Check 4**:

- ISO 14401:2004
- DIN EN 15830

The standards are available from **EMM-Check 4** version 4.0.8.0.

- **Implementation of working lights**

Working lights from HELLA KGaA Hueck & Co., Lippstadt (Germany), are now available in **EMM-Check 4** since version 4.0.8.0. The working lights have been implemented in a close cooperation with this manufacturer.

From **8th to 14th of November 2015** we will be available in **Hall 16** at **Booth D23** as a partner of Mekra Lang GmbH & Co. KG. Experience a Live-Demo of **EMM-Check 4** and the Oculus Rift integration.

We wish you a successful exhibition and look forward to your visit and interesting discussions with you!

REKNOW GmbH & Co. KG
Neumünstersche Straße 14
20251 Hamburg
Germany

Registergericht:
Hamburg
HRA: 114880

REKNOW Verwaltungs GmbH
Neumünstersche Straße 14
20251 Hamburg
Germany

Registergericht:
Hamburg
HRB: 123110

fon : +49(0) 40 / 98 76 00 02
fax : +49(0) 40 / 98 76 00 04
eMail : info@reknow.de
Internet: www.reknow.de

Geschäftsführer:
Dipl.-Ing. (FH) Dirk Janßen
Dipl.-Ing. Sebastian Schneider

Kreissparkasse Walsrode
BLZ : 251 523 75
Kto-Nr. : 1094671
IBAN : DE35 2515 2375 0001 0946 71
SWIFT-BIC: NOLADE21WAL

Steuernummer: 49/654/00864
Ust-ID-Nr. : DE 259 307 098

• Mirror and camera simulation

The module "Mirror and Camera Simulation" makes it possible to simulate mirrors and camera in **EMM-Check** in real time. The module is licensed separately.

- Mirror simulation:
 - **Display of mirror reflections in real time**
 - **any number of mirrors simulated simultaneously**
 - **Link from eye point to mirror (Viewer-Mode / Driver Mode)**
 - **Simulation of head and torso movement with Oculus Rift VR-Goggles**
 - **Adjustment of mirrors like on the real vehicle**
 - **support of user defined mirrors in preparation**



- Camera simulation:
 - **Display of camera image on a monitor**
 - **any number of cameras can be simulated simultaneously**
 - **Multiple cameras connected to one monitor (in preparation)**
 - **Definition of the best position / opening angle of the camera from the driver's view**
 - **Generic Monitor - can be put on top of the display of a monitor model**
 - **Monitor-Catalog (Mekra Lang, in preparation)**



• Extended functions for documentation

Graphical documentation and decals are often required for the operator's manual of a vehicle. A new function has therefore been implemented in **EMM-Check 4** to create images from graphical objects of standards (e.g. text circle, maskings and vehicle) in color, grayscale or black & white.



• Details of HSE-Document

Through direct contact to the HSE (Health and Safety Executive) the requirements of the HSE-Dokument "Earth Moving Machinery - changes to visibility requirements" could be implemented in EMM-Check 4 as follows:

- The test body has to be moved in the test circle of ISO 5006 in a way that no gap appear. In EMM-Check it will be rotated around the vehicle and moved outwards.
- If an area of 0.3m x 0.2m can be seen (horizontal rectangle), the test body will be counted as visible.
- Vertical maskings with a width of up to 30mm can be ignored. Bigger maskings lead to an invisibility of the test body. Smaller maskings will be summed up.
- The light source movement of the ISO 5006:2006 has to be used for the analysis.

Further information you'll find here:

<http://www.hse.gov.uk/safetybulletins/earth-moving-machinery.htm>

• Save the date

Please note the following dates:

- Agritechnica 2015
 - **8th till 14th of November 2015, Hannover**
 - **REKNOW at the booth of MEKRA Lang**
- Bauma 2016
 - **11th till 17th of April 2016, Munich**
 - **REKNOW at the booth of MEKRA Lang**
- EMM-Check Customer Days 2016
 - **14th of September 2016, Hannover**
 - **21rd of September 2016, Stuttgart**